



November 2022

Walla Walla Valley Real Estate Summary



(509) 525-2151 Windermere Real Estate/Walla Walla

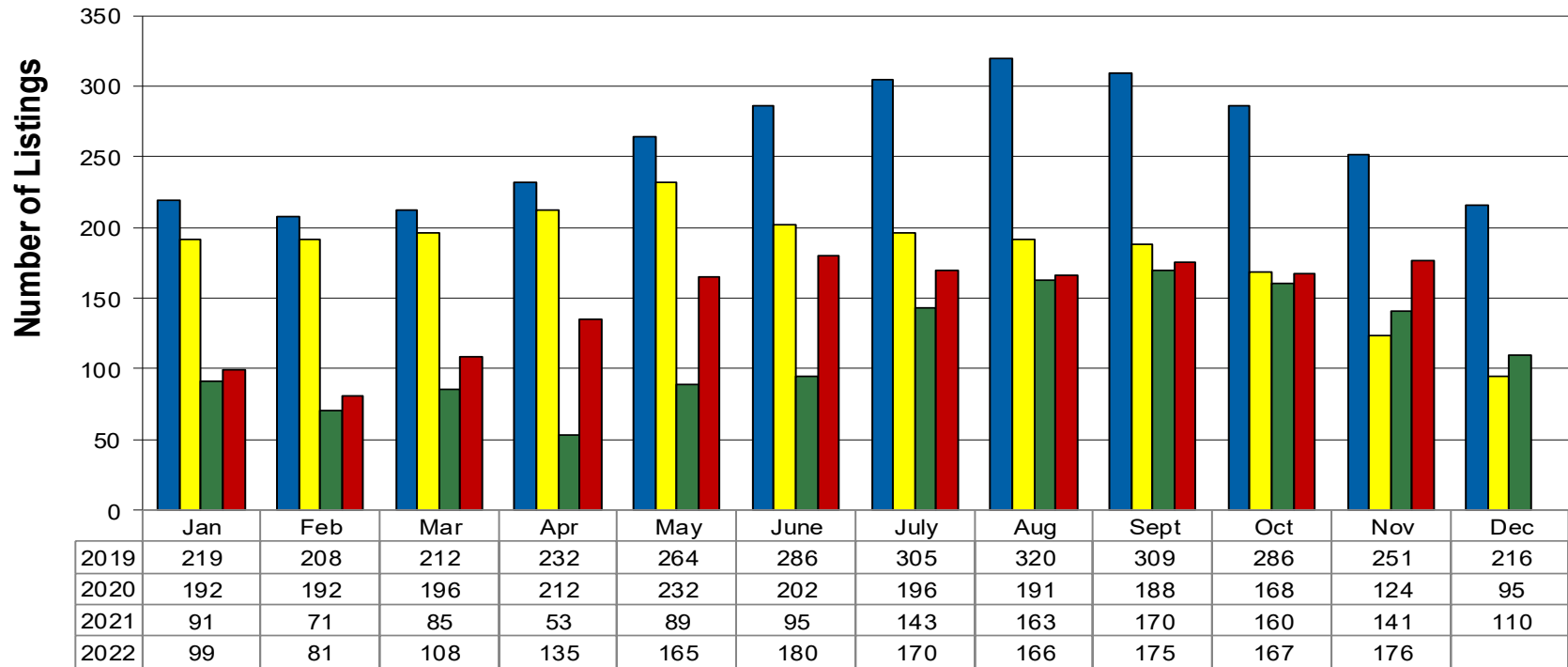
Data is from source deemed reliable, but is not warranted by WWAR members. All information compiled from MLS Statistical Reports. Listing and selling brokers are not responsible for errors in data.





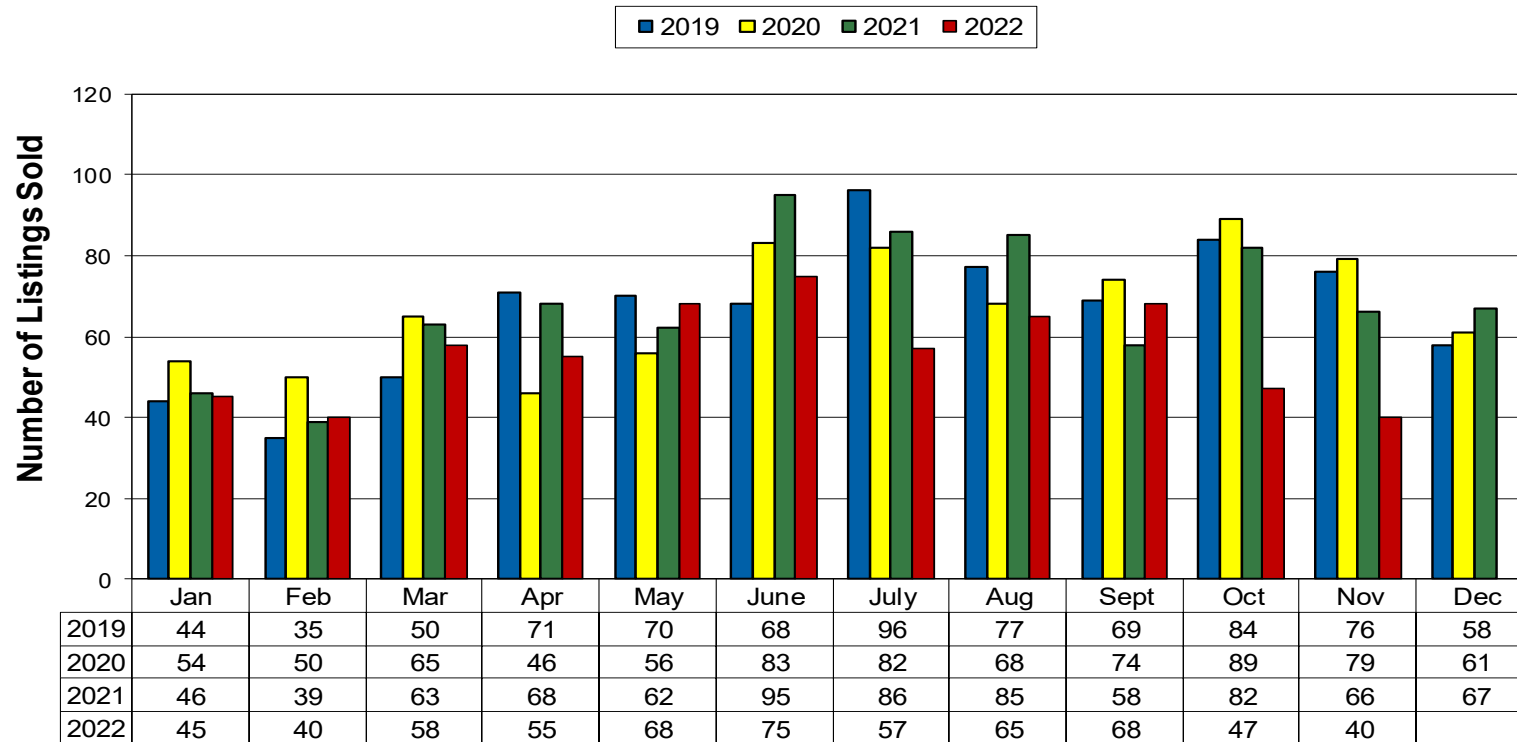
12 Month Residential Inventory Comparison - Single Family Homes

■ 2019 ■ 2020 ■ 2021 ■ 2022



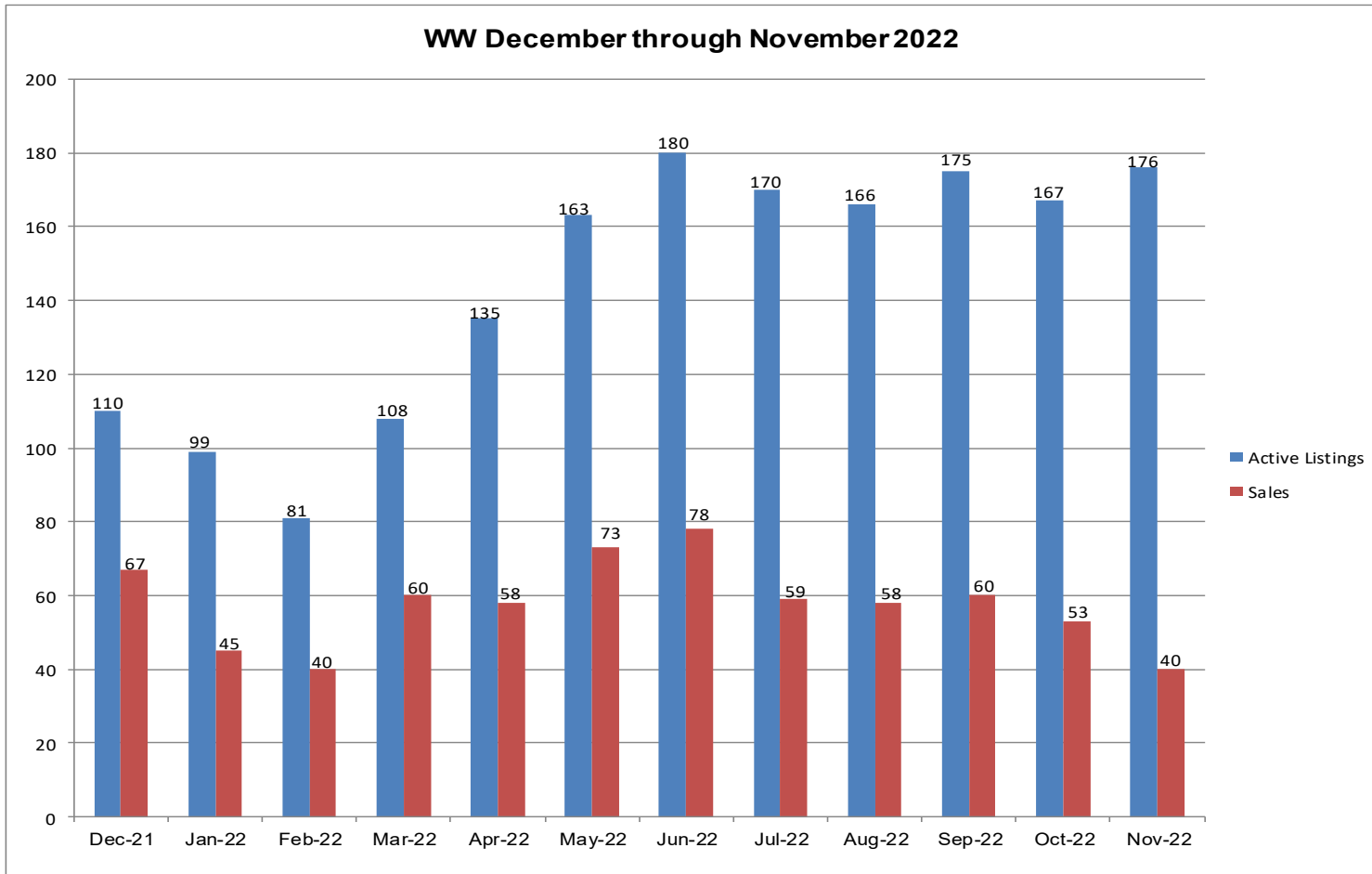


12 Month Residential Closing Comparison - Single Family Homes





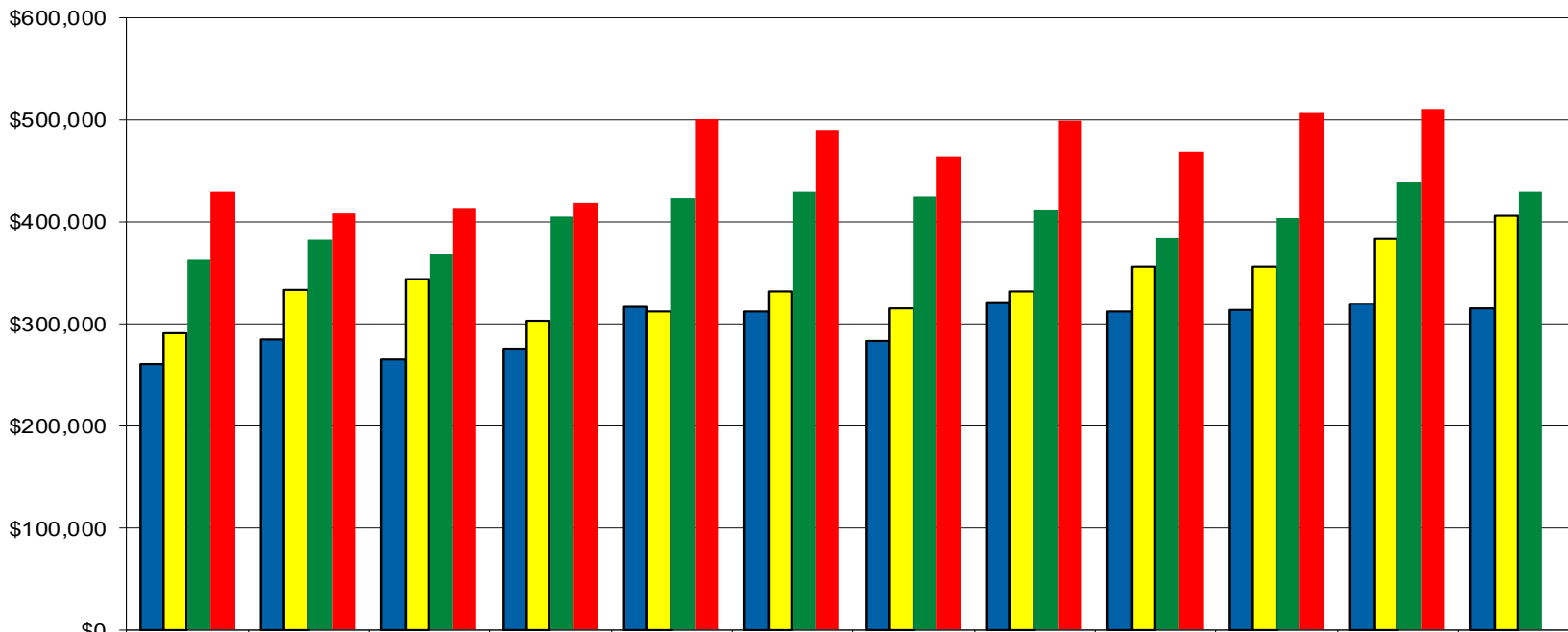
WW December through November 2022





Monthly Average Residential Sales Price Single Family Homes

■ 2019 ■ 2020 ■ 2021 ■ 2022

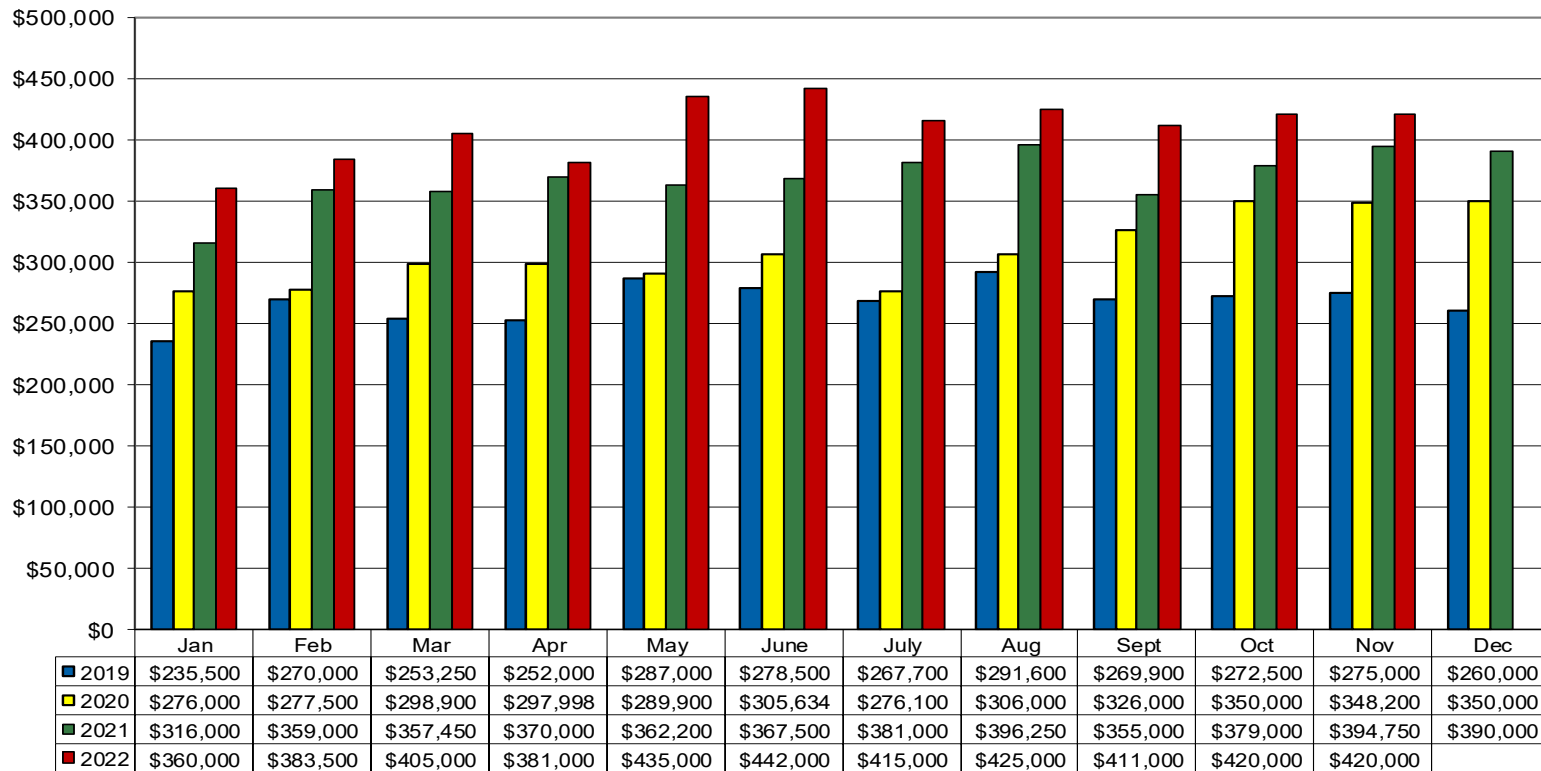


| | Jan | Feb | Mar | Apr | May | June | July | Aug | Sept | Oct | Nov | Dec |
|------|-----------|-----------|-----------|-----------|-----------|-----------|-----------|-----------|-----------|-----------|-----------|-----------|
| 2019 | \$260,093 | \$284,100 | \$264,668 | \$275,601 | \$316,186 | \$311,953 | \$282,305 | \$320,898 | \$311,874 | \$313,486 | \$318,762 | \$314,157 |
| 2020 | \$290,362 | \$332,365 | \$343,752 | \$302,273 | \$311,815 | \$331,214 | \$313,730 | \$330,993 | \$355,534 | \$355,155 | \$382,278 | \$405,566 |
| 2021 | \$361,494 | \$381,158 | \$367,881 | \$405,002 | \$423,294 | \$428,849 | \$424,007 | \$411,344 | \$383,130 | \$403,122 | \$438,289 | \$429,070 |
| 2022 | \$429,055 | \$408,248 | \$411,474 | \$418,767 | \$500,487 | \$488,726 | \$463,026 | \$498,196 | \$468,352 | \$505,772 | \$509,500 | |



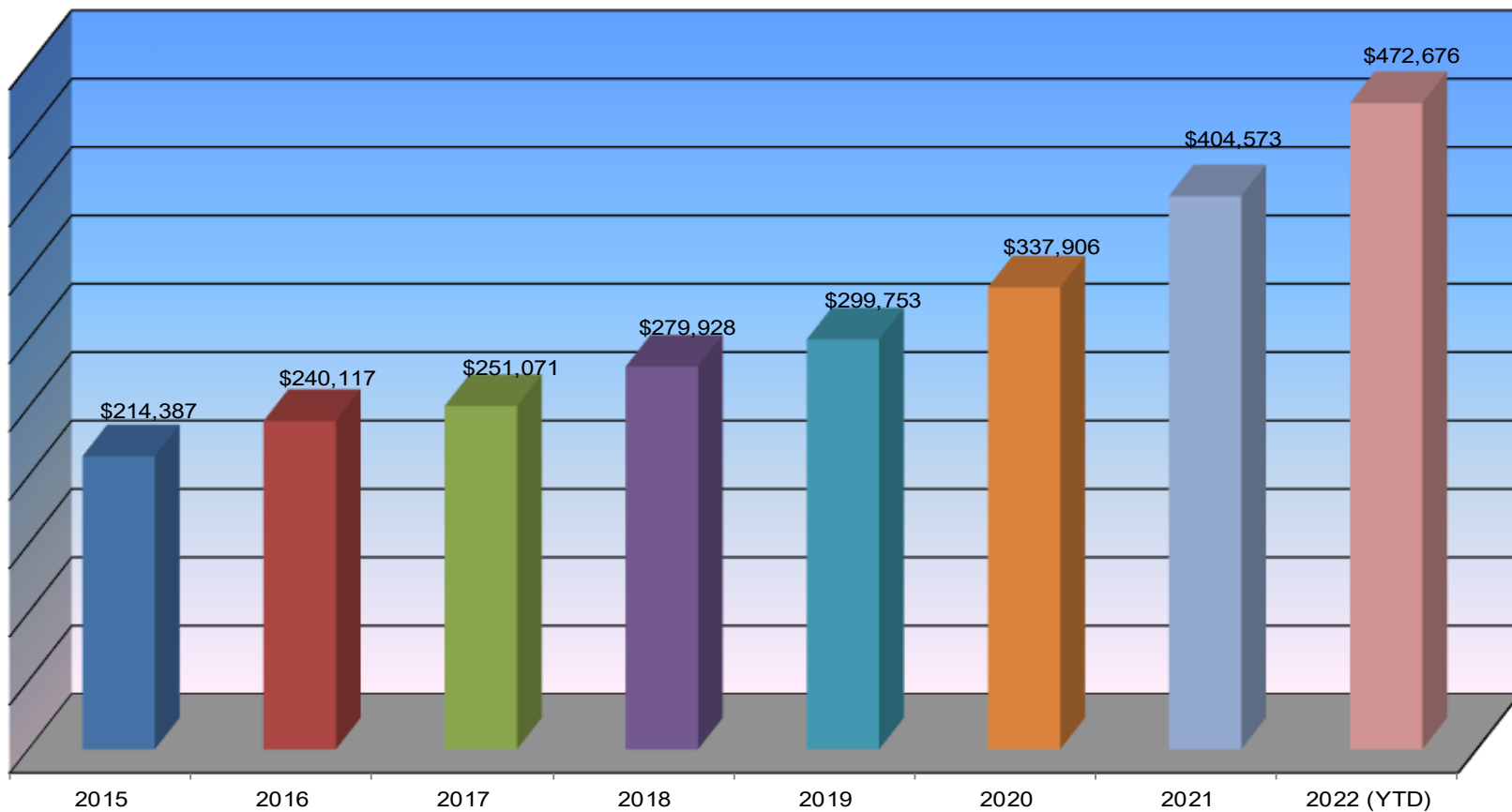
Monthly Median Residential Sales Price Single Family Homes

■ 2019 ■ 2020 ■ 2021 ■ 2022





Walla Walla Valley Single Family Residential Homes Average Sales Price



(509) 525-2151 Windermere Real Estate/Walla Walla

Data is from source deemed reliable, but is not warranted by WWAR members. All information compiled from MLS Statistical Reports. Listing and selling brokers are not responsible for errors in data.





Walla Walla Valley Single Family Residential Homes Number of Sales

