



October 2021

# Walla Walla Valley Real Estate Summary



**(509) 525-2151** Windermere Real Estate/Walla Walla

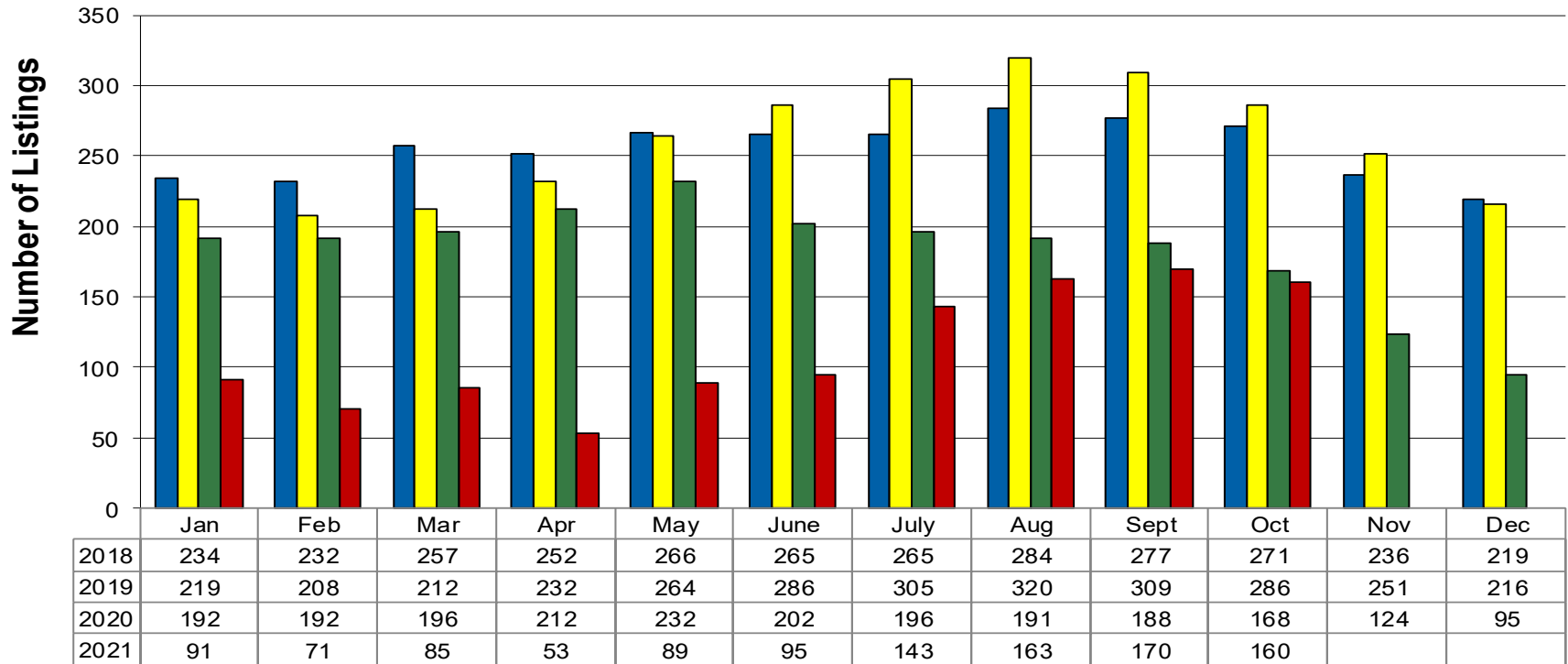
Data is from source deemed reliable, but is not warranted by WWAR members. All information compiled from MLS Statistical Reports. Listing and selling brokers are not responsible for errors in data.





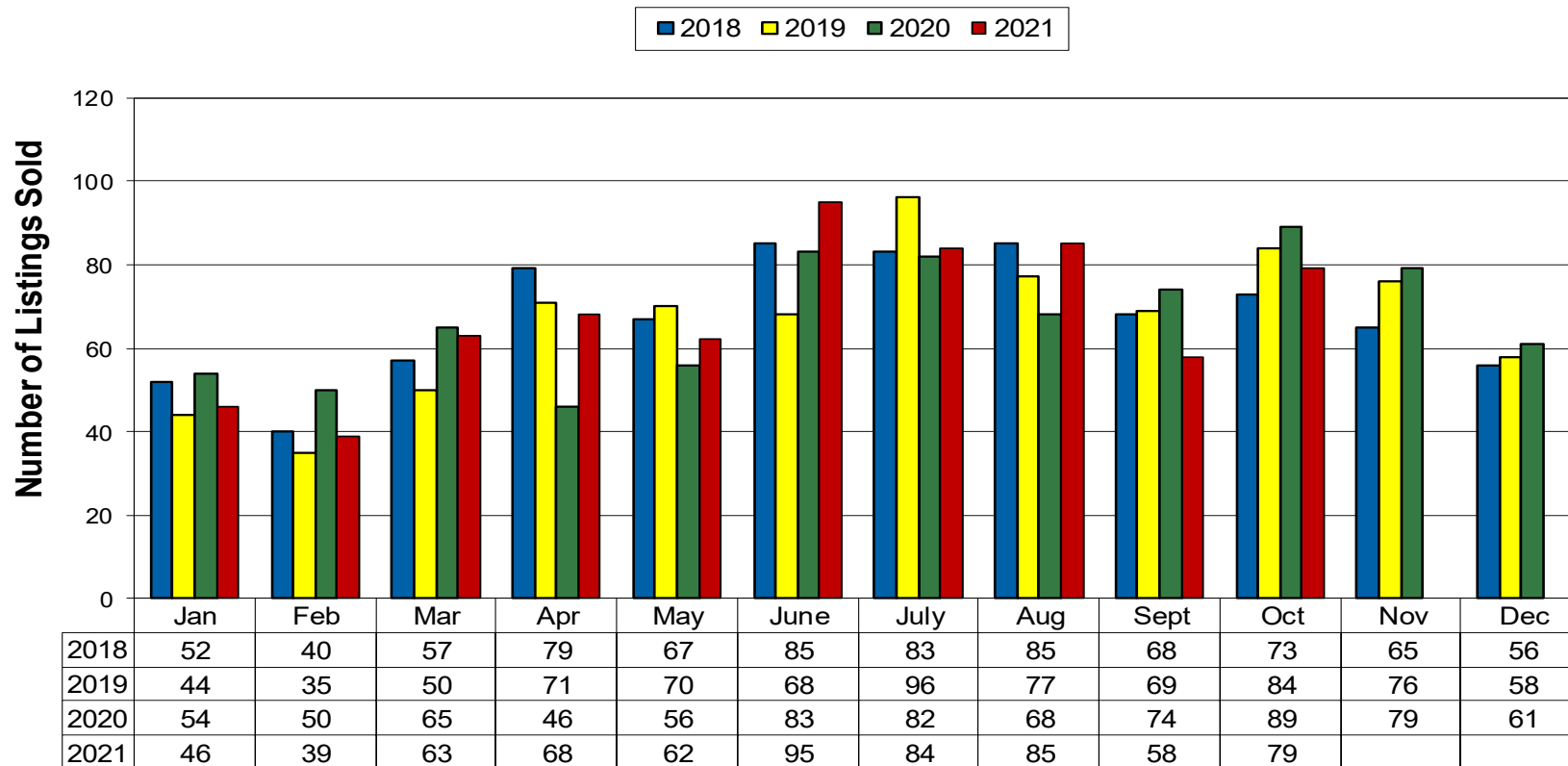
### 12 Month Residential Inventory Comparison - Single Family Homes

■ 2018 ■ 2019 ■ 2020 ■ 2021



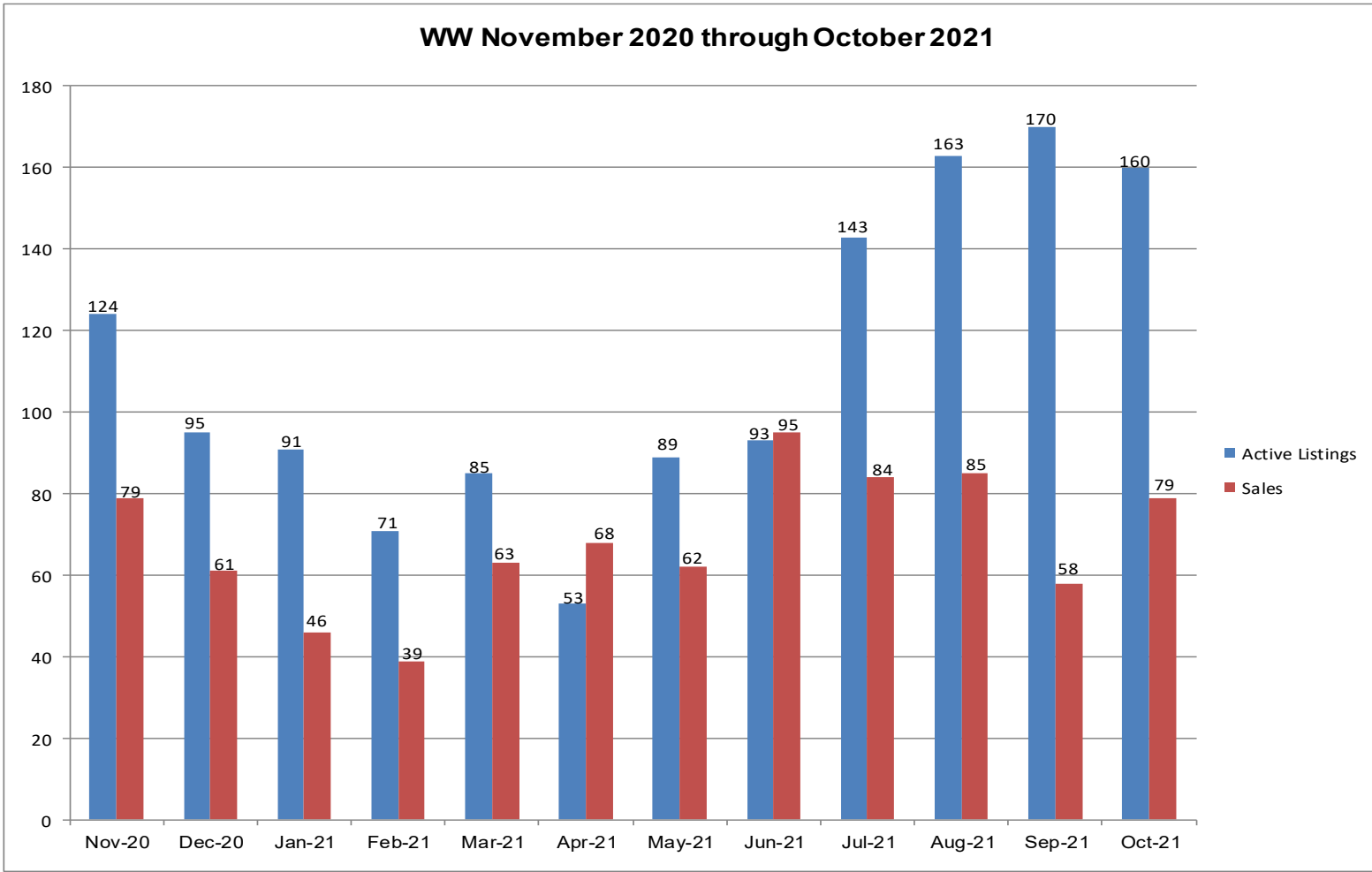


## 12 Month Residential Closing Comparison - Single Family Homes





### WW November 2020 through October 2021



**(509) 525-2151** Windermere Real Estate/Walla Walla

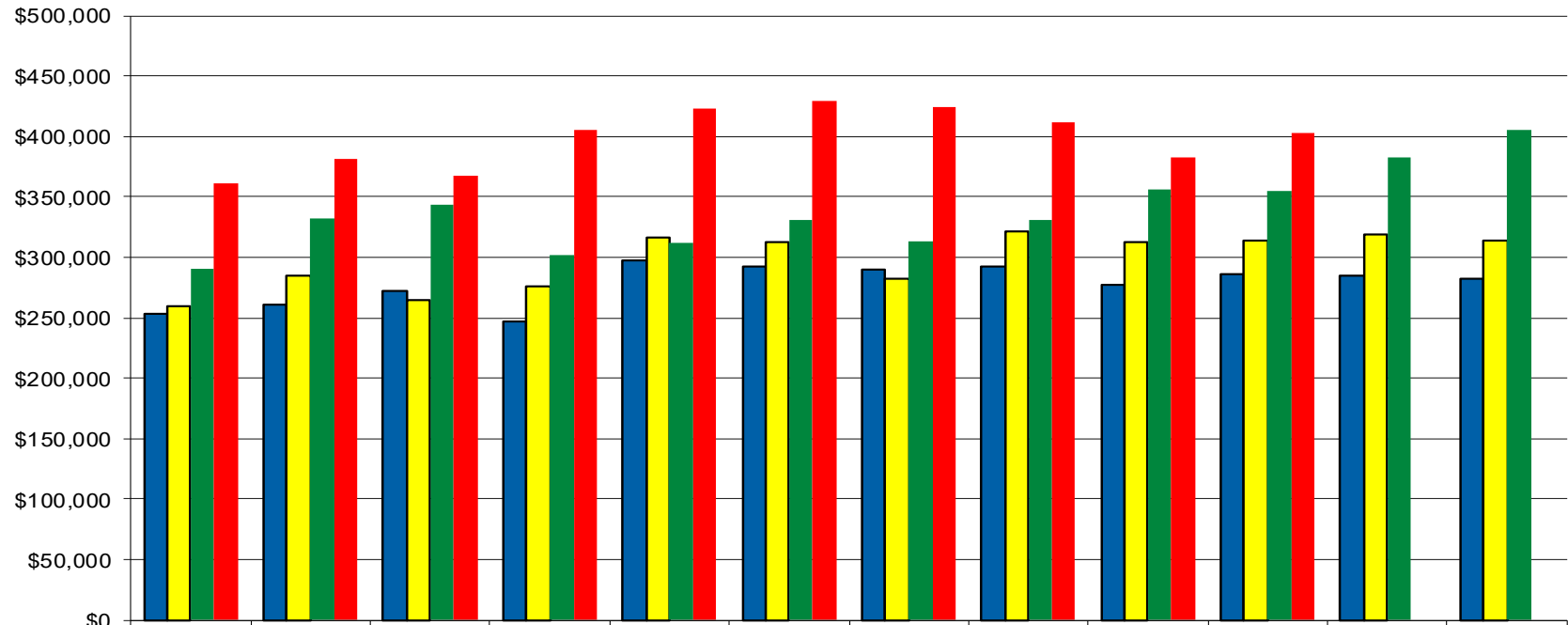
Data is from source deemed reliable, but is not warranted by WWAR members. All information compiled from MLS Statistical Reports. Listing and selling brokers are not responsible for errors in data.





### Monthly Average Residential Sales Price Single Family Homes

■ 2018 ■ 2019 ■ 2020 ■ 2021



|      | Jan       | Feb       | Mar       | Apr       | May       | June      | July      | Aug       | Sept      | Oct       | Nov       | Dec       |
|------|-----------|-----------|-----------|-----------|-----------|-----------|-----------|-----------|-----------|-----------|-----------|-----------|
| 2018 | \$253,189 | \$260,184 | \$272,468 | \$246,941 | \$296,866 | \$292,192 | \$289,688 | \$291,752 | \$277,379 | \$285,864 | \$285,187 | \$282,049 |
| 2019 | \$260,093 | \$284,100 | \$264,668 | \$275,601 | \$316,186 | \$311,953 | \$282,305 | \$320,898 | \$311,874 | \$313,486 | \$318,762 | \$314,157 |
| 2020 | \$290,362 | \$332,365 | \$343,752 | \$302,273 | \$311,815 | \$331,214 | \$313,730 | \$330,993 | \$355,534 | \$355,155 | \$382,278 | \$405,566 |
| 2021 | \$361,494 | \$381,158 | \$367,881 | \$405,002 | \$423,294 | \$428,849 | \$424,007 | \$411,344 | \$383,130 | \$403,122 |           |           |



(509) 525-2151 Windermere Real Estate/Walla Walla

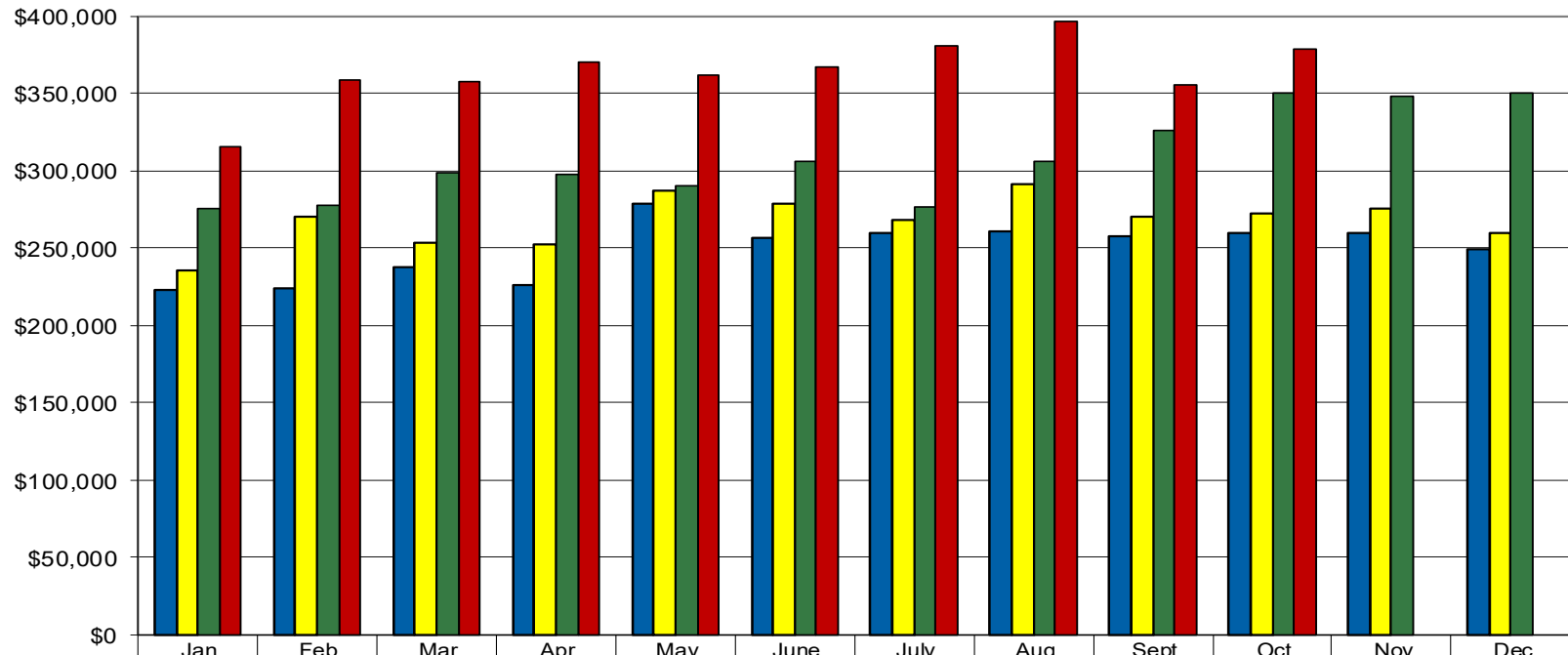
Data is from source deemed reliable, but is not warranted by WWAR members. All information compiled from MLS Statistical Reports. Listing and selling brokers are not responsible for errors in data.





### Monthly Median Residential Sales Price Single Family Homes

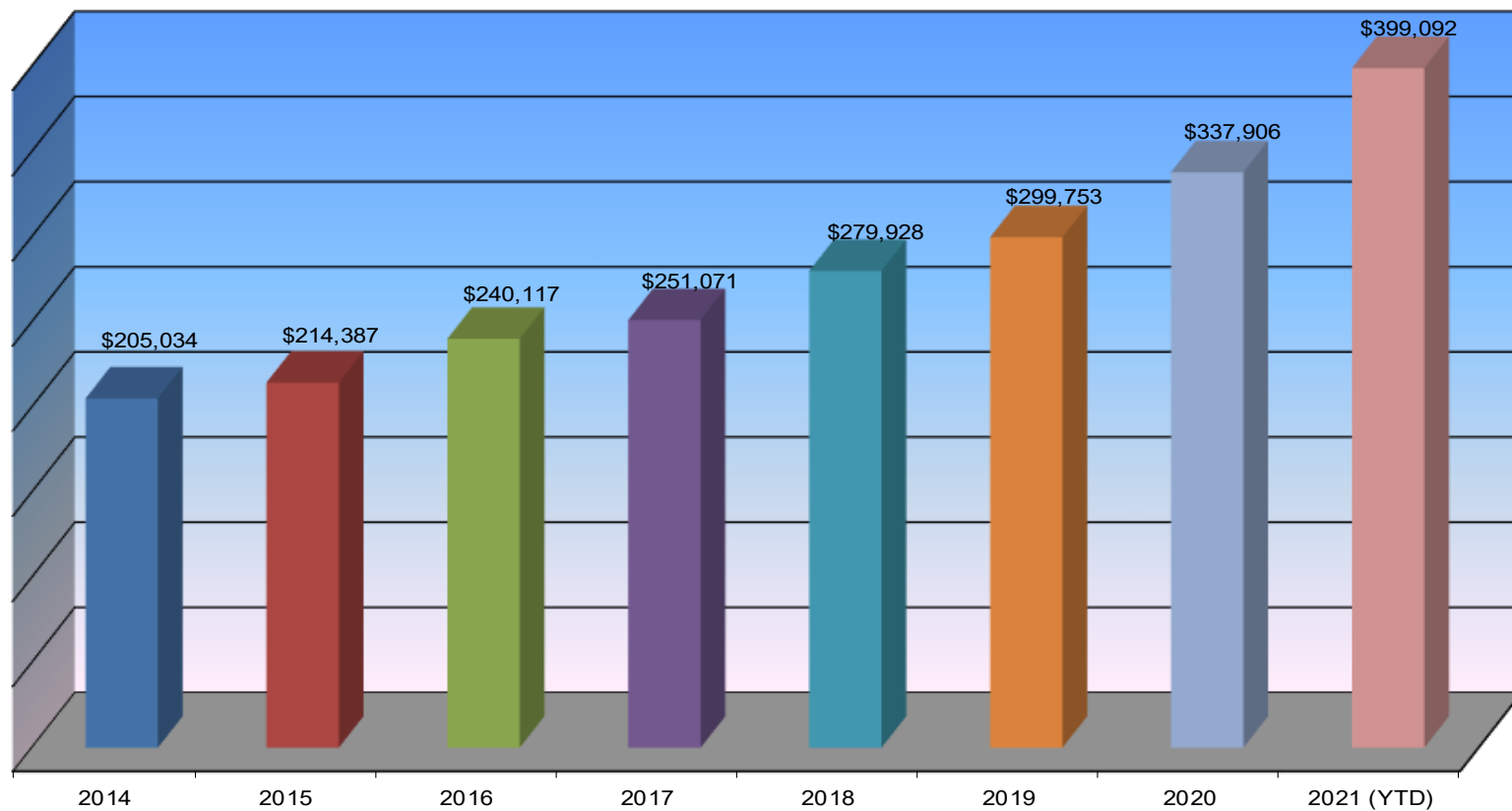
■ 2018 ■ 2019 ■ 2020 ■ 2021



|        |           |           |           |           |           |           |           |           |           |           |           |           |
|--------|-----------|-----------|-----------|-----------|-----------|-----------|-----------|-----------|-----------|-----------|-----------|-----------|
| ■ 2018 | \$222,750 | \$224,000 | \$238,000 | \$226,362 | \$279,000 | \$257,000 | \$259,700 | \$261,000 | \$257,500 | \$259,500 | \$260,000 | \$248,700 |
| ■ 2019 | \$235,500 | \$270,000 | \$253,250 | \$252,000 | \$287,000 | \$278,500 | \$267,700 | \$291,600 | \$269,900 | \$272,500 | \$275,000 | \$260,000 |
| ■ 2020 | \$276,000 | \$277,500 | \$298,900 | \$297,998 | \$289,900 | \$305,634 | \$276,100 | \$306,000 | \$326,000 | \$350,000 | \$348,200 | \$350,000 |
| ■ 2021 | \$316,000 | \$359,000 | \$357,450 | \$370,000 | \$362,200 | \$367,500 | \$381,000 | \$396,250 | \$355,000 | \$379,000 |           |           |



### Walla Walla Valley Single Family Residential Homes Average Sales Price



**(509) 525-2151** Windermere Real Estate/Walla Walla

Data is from source deemed reliable, but is not warranted by WWAR members. All information compiled from MLS Statistical Reports. Listing and selling brokers are not responsible for errors in data.





### Walla Walla Valley Single Family Residential Homes Number of Sales

