

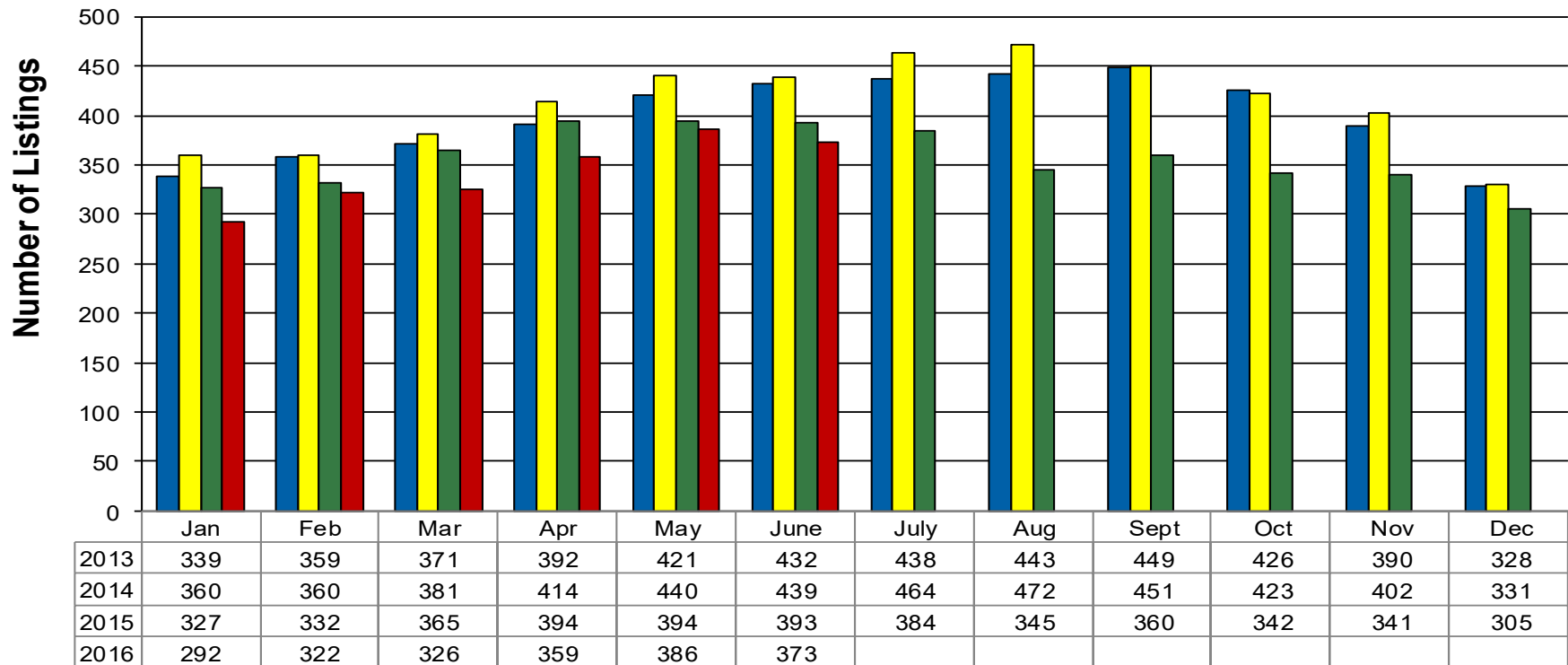


Photo Courtesy of Christina Kennell Photography



12 Month Residential Inventory Comparison - Single Family Homes

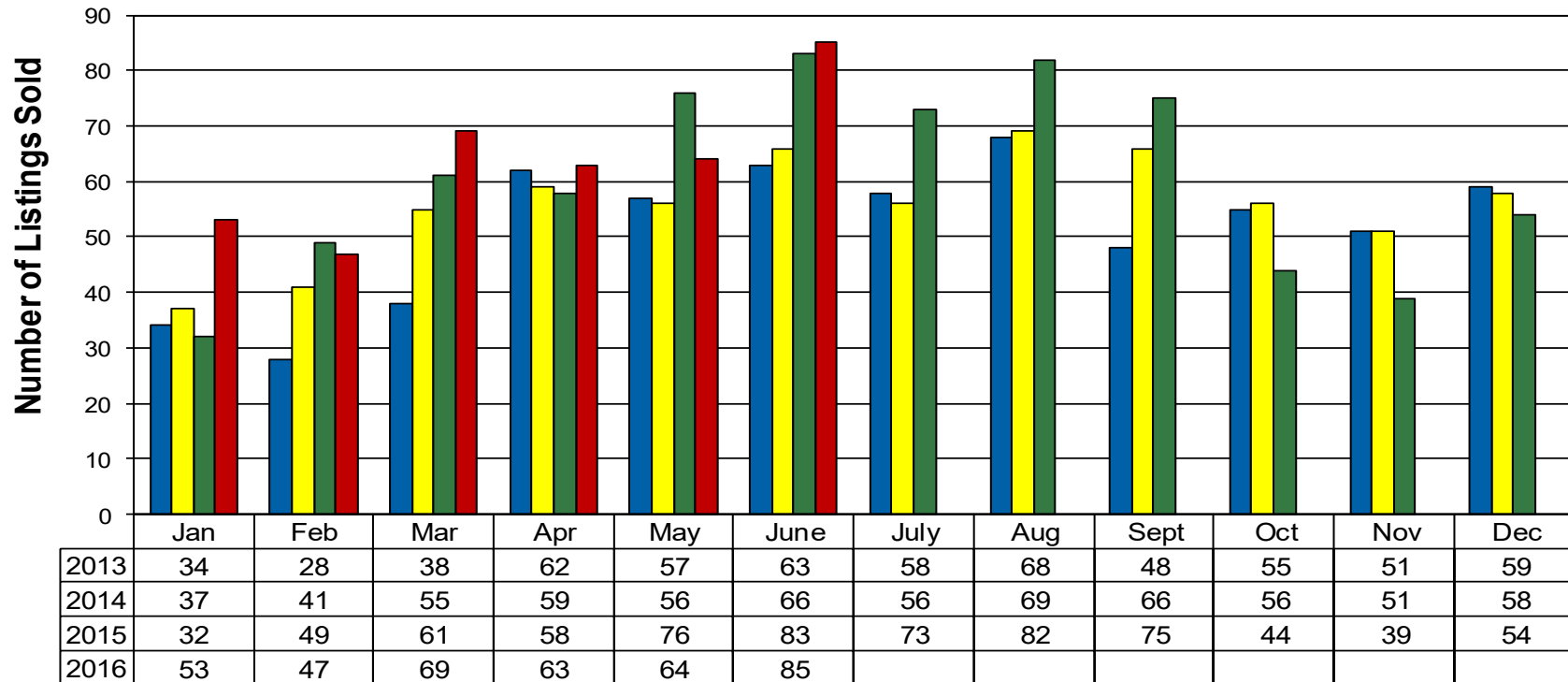
■ 2013 ■ 2014 ■ 2015 ■ 2016





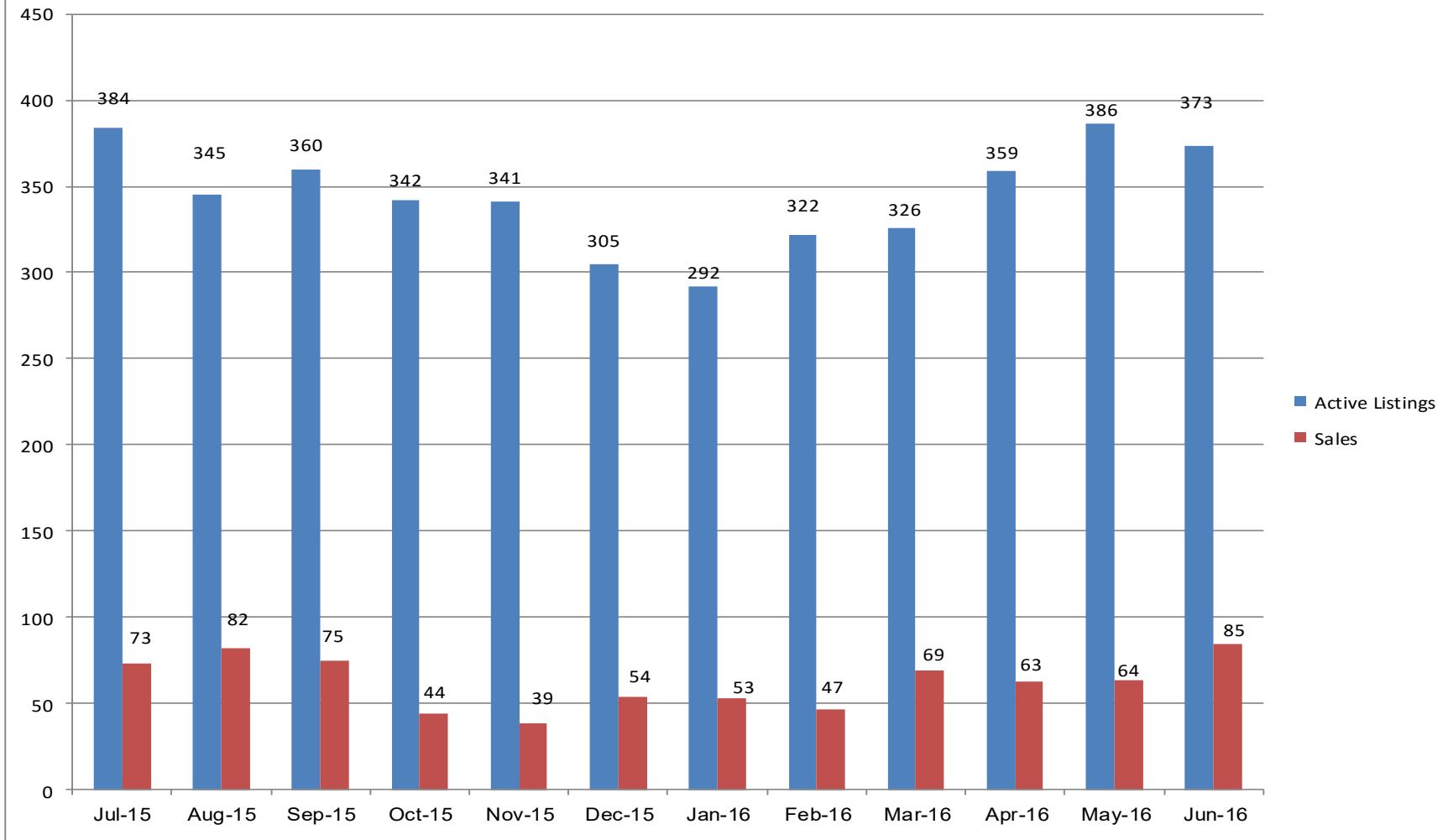
12 Month Residential Closing Comparison - Single Family Homes

■ 2013
 ■ 2014
 ■ 2015
 ■ 2016





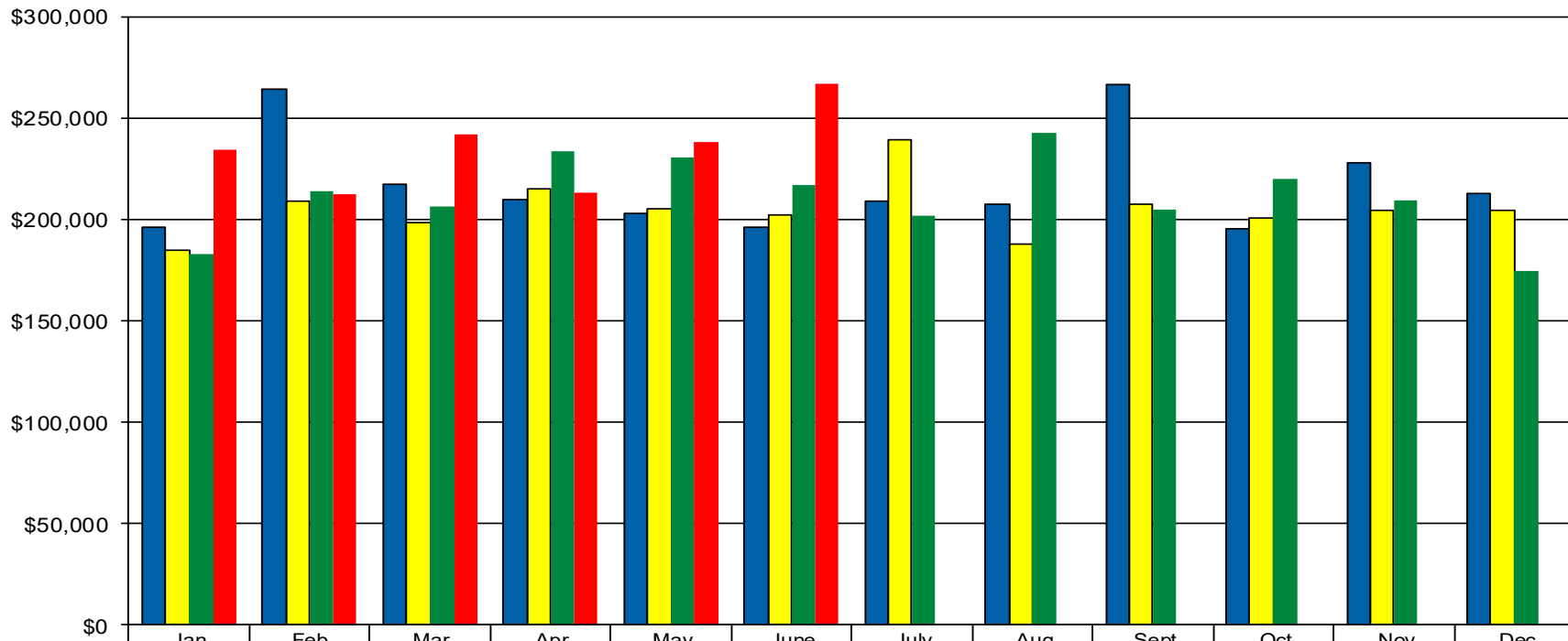
**WW Valley Single Family Residential Statistics -
 June 2015 through May 2016**





**Monthly Average Residential Sales Price
Single Family Homes**

■ 2013 ■ 2014 ■ 2015 ■ 2016

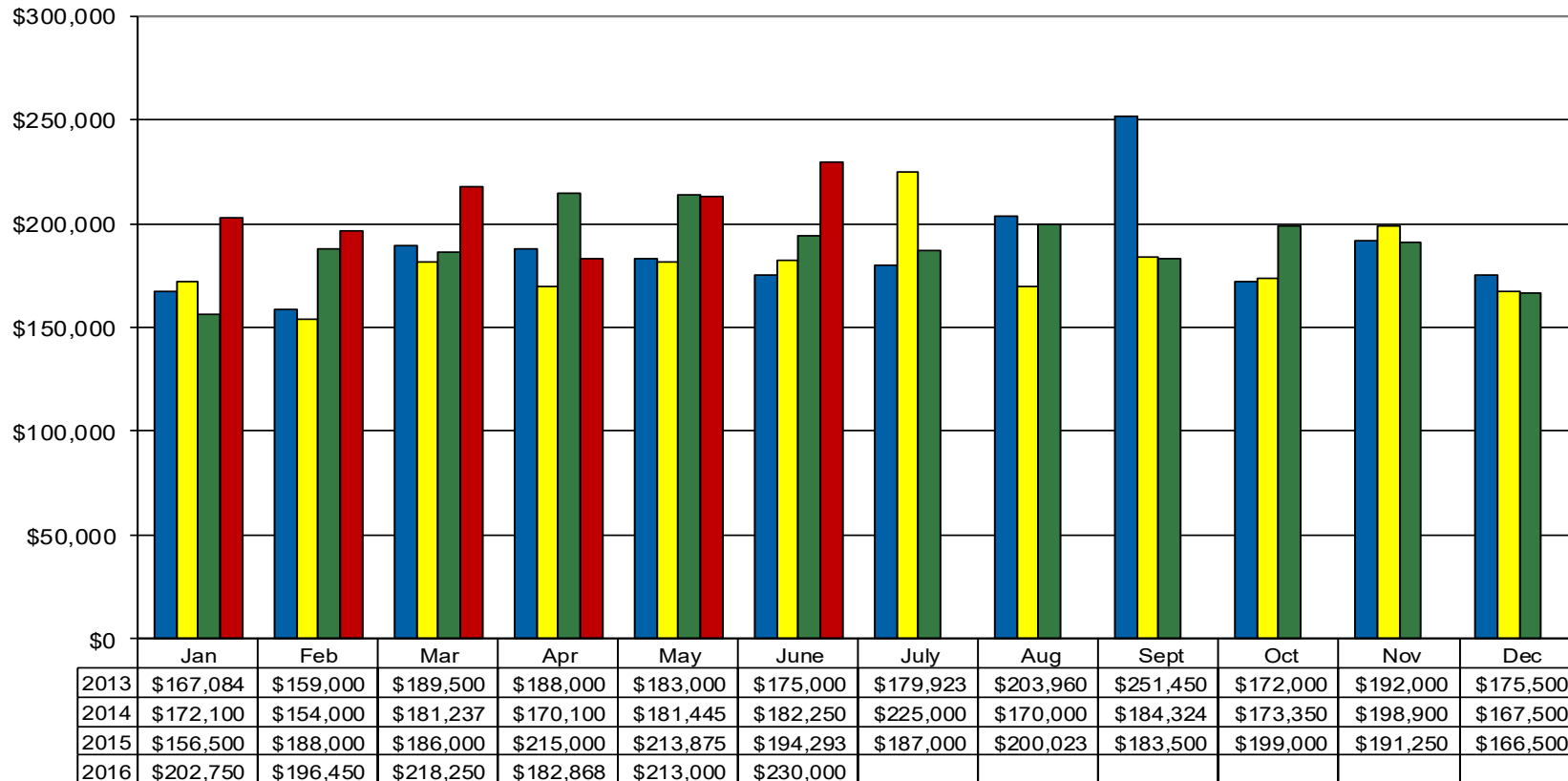


	Jan	Feb	Mar	Apr	May	June	July	Aug	Sept	Oct	Nov	Dec
2013	\$196,359	\$263,898	\$217,137	\$209,870	\$202,783	\$196,281	\$208,585	\$207,265	\$266,322	\$195,416	\$227,823	\$212,728
2014	\$184,790	\$208,698	\$198,516	\$215,063	\$205,030	\$202,420	\$239,263	\$187,925	\$207,169	\$200,358	\$204,290	\$204,356
2015	\$183,162	\$213,867	\$206,375	\$233,213	\$230,247	\$217,211	\$201,724	\$242,624	\$204,846	\$220,245	\$209,357	\$174,190
2016	\$234,028	\$212,443	\$242,187	\$212,897	\$238,051	\$267,160						



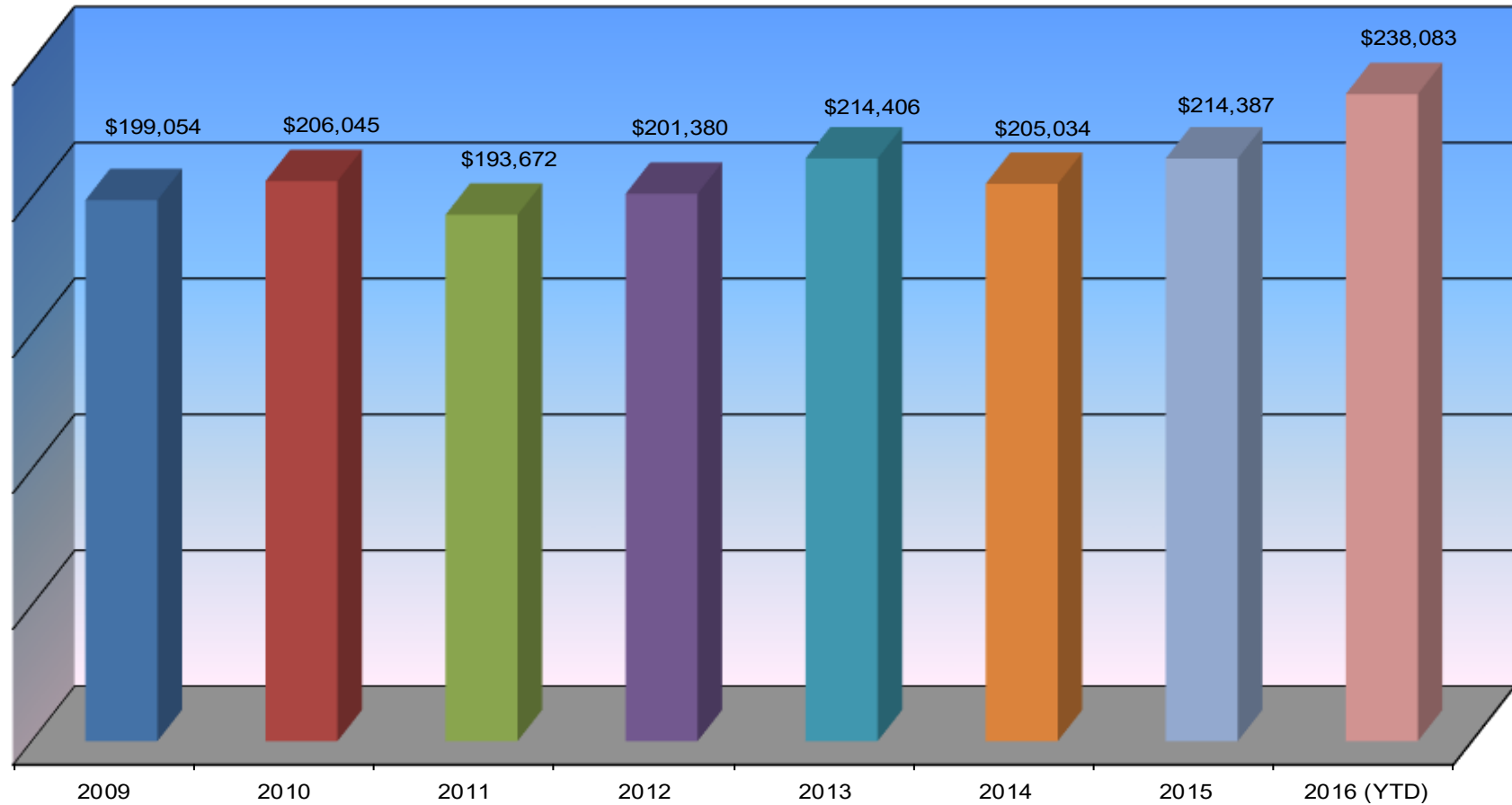
**Monthly Median Residential Sales Price
Single Family Homes**

■ 2013 ■ 2014 ■ 2015 ■ 2016





**Walla Walla Valley Single Family Residential Homes
Average Sales Price**





Walla Walla Valley Single Family Residential Homes Number of Sales

